

China's Long-Term International Trade Statistics : by Commodity, 1952-1964 and 1981-2000

Kiyota, Kozo / Yue, Ximing / Fukao, Kyoji

(出版者 / Publisher)

法政大学比較経済研究所 / Institute of Comparative Economic Studies, Hosei University

(雑誌名 / Journal or Publication Title)

Journal of International Economic Studies / Journal of International Economic Studies

(巻 / Volume)

20

(開始ページ / Start Page)

75

(終了ページ / End Page)

88

(発行年 / Year)

2006-03

(URL)

<https://doi.org/10.15002/00001976>

China's Long-Term International Trade Statistics: by Commodity, 1952-1964 and 1981-2000

Kyoji Fukao

Institute of Economic Research, Hitotsubashi University

Kozo Kiyota

Faculty of Business Administration, Yokohama National University

Ximing Yue

The Economic Institute, Chinese Academy of Social Sciences

1. Introduction

International trade has been a key engine driving Chinese economic growth in recent decades. Yet, long-term analyses of China's trade are still difficult because the country's trade statistics for the post-war period up to the mid-1980s have many shortcomings. For example, official customs statistics published by the Chinese government during this period, if they were published at all, do not provide any breakdown by commodity classification.

Against this background, we recently compiled new statistics of China's trade during 1952-1964 and 1981-2000 at the 3-digit level of the Standard International Trade Classification, Revision 1 (SITC-R1). The statistics for 1952-1964 and 1981-1987 are based on data we purchased from China's National Statistical Bureau.¹ The data for 1988-2000 are compiled from the Commodity Trade Statistics of the United Nations (UN Comtrade) as a part of our joint work with scholars at the Institute of Development Economics, Japan External Trade Organization (IDE-JETRO).² In this paper, we provide an overview of existing statistics of China's international trade and present our newly compiled statistics.

The paper is organized as follows. The next section provides a brief historical overview of China's official trade statistics and then describes China's official customs statistics today. Customs statistics were not published before 1984 (Custom statistics for the period after 1980 were published later). However, both Japanese IDE and American CIA have tried to estimate statistics for that period. We will explain these two set of estimates in Section 3. Section 4 reports our new trade statistics. Section 5 concludes with a discussion of remaining problems with the trade statistics we have compiled.

2. A brief history of China's trade statistics and description of customs statistics today

In China, Customs is responsible for the collection, compilation and dissemination of the

¹ The compilation of the statistics for 1952-64 and 1981-87 was conducted as a part of the Ministry of Education COE Program "Asia Long-Term Historical Statistical Database" headed by Konosuke Odaka of Hosei University.

² This work is partly funded by the Ministry of Education 21st Century COE Program "Research Unit for Statistical Analysis in Social Sciences" headed by Osamu Saito of Hitotsubashi University.

country's external merchandise trade statistics - known as Customs statistics. Customs statistics have a history of nearly 150 years, dating back to 1854. Since the founding of the People's Republic of China, along with the changes of China's economic and trade system, China's official trade statistics have undergone four stages of development as follows:

1949-1956: After the founding of the People's Republic of China in 1949, international trade was principally conducted by private companies until the mid-1950s. During this period Customs statistics, which were compiled by the General Administration of Customs, were the only kind of trade statistics in China. Like those in other countries, the customs statistics are based on importers' and exporters' customs declarations. But Customs statistics have not been made to public and only used within government or exchanged with some countries.

1957-1965: foreign trade was run exclusively by state-run trading companies during this period and there existed two kinds of trade statistics in China: customs statistics and *Foreign Trade Business Statistics* (FTBS). FTBS was based on reports from Chinese trade companies and was compiled by the Ministry of Foreign Trade and Economic Cooperation (now the Ministry of Commerce). Because FTBS were compiled mainly in order to monitor trading companies' activities and control China's international trade, they suffer from various shortcomings that make them unsuitable for international comparisons. For example, their coverage differ from the customs statistics of other countries and they contain neither data by country nor by commodity.

1966-1978: customs statistics were regarded redundant and discontinued during the "Cultural Revolution."

1979-present: Shortly after taking the open-door policy, the government decided to resume the customs statistics. The publication of Customs statistics was started in 1984. Customs statistics with detailed commodity classification is only available from the mid 1980s. Even aggregated level Customs statistics are available only for the period after 1980.

We now turn to a detailed description of the customs statistics.

1) Coverage

A detailed description of the coverage of China's customs statistics is provided in *The System of Chinese Customs Statistics*. There are two conditions for commodities to be recorded in custom statistic. The first is that the commodities must go through Chinese border. The second condition is that the movement of commodities must lead to increase or decrease in endowment of resources in China. It means that not only exports and imports of goods by economic transaction, but also goods transferred by foreign aid program, goods donated by compatriots in Hong Kong and Macau and Chinese with foreign citizenships are recorded in the customs statistics.

On the other hand, the following commodities are excluded from customs statistics:

- * Goods in transit that do not enter Chinese customs territory;
- * Temporary imports or exports of goods that are subsequently re-exported or re-imported within a specified period;
- * Goods on lease for a period of less than one year;
- * Goods carried into bonded warehouses;
- * Returned exported goods.

2) Valuation

Exports are valued on an FOB basis and imports on a CIF basis in the statistics.

3) Timing of recording

Exports and imports are recorded when they clear customs.

4) Commodity Classification

The commodity classification used in the customs statistics is provided in an official document entitled *Commodity Classification for China Customs Statistics* (CCCS). The CCCS was based on the Standard International Trade Classification Revision 2 in 1980-1991 and since then has been based on the Harmonized Commodity Description and Coding System (HS). Commodity codes in the CCCS consist of 8 digits. The first 6 digits in the current CCCS are identical to the codes in the HS, while the last 2 digits is a China-specific sub-heading for the purpose of tariff, trade statistics and trade policy measures.

5) Identification of trade partner countries and regions in the customs statistics

Partner countries are identified following international conventions, with the country of origin being recorded for imports and the country of final destination being recorded for exports. The country of origin is the country in which goods have been cultivated, mined or manufactured. If two or more countries were involved in the making of the product, the place where the last substantial work or processing occurred is recorded as the country of origin. The country of final destination refers to the country in which the goods are consumed, utilized or further processed or manufactured. When the final destination cannot be identified, the last country or region to which the goods are shipped is considered as the country of destination.

An important issue related to the identification of partner countries is that statistics on bilateral trade flows recorded in China and the partner country are inconsistent. For example, in many years, Chinese customs statistics report a deficit in the country's trade with Japan, while Japanese trade statistics show Japan has a deficit in its trade with China. Similar discrepancies can be found in China's trade with the United States and probably other countries as well. According to Chinese customs statistics, China recorded a trade deficit with the U.S. before 1992, while U.S. trade statistics show a large American trade deficit with China. Chinese customs statistics show a surplus for China in its trade with the U.S. from 1993 onward, but the amount is much smaller than the deficit by the U.S. in its trade statistics.

There are several factors which are likely to contribute to the large discrepancies between China's trade statistics and those of Japan or the United States. These factors include the fact that in the statistics of each country, exports and imports are recorded on an FOB and CIF basis, differences in the timing of recording, transit trade, and statistical errors. Among these, probably the most important factor is the transit trade via Hong Kong. Before China's economic liberalization and opening up to the outside world, most Chinese trade, including that with Japan and the U.S., passed through Hong Kong. And Hong Kong's role as the dominant entrepot for China's trade continued for a while even after the reforms. Goods that are exported from China to Japan via Hong Kong are treated in Chinese customs statistics as exports to Hong Kong if the final destination is unknown, while custom statistics in Japan may identify the same goods as originating from China. Similarly, in the case of goods that are exported from Japan to China via Hong Kong, Chinese customs statistics will record these goods as originating from Japan, while Japanese customs will treat as the Hong Kong as the final destination if they do not know that the goods will be shipped on to China. Thus, the main reason for the discrepancies appears to be difficulties in correctly identify the final des-

tinuation of exports as a result of their transit via Hong Kong. The same problem, of course, also explains the discrepancies between China's trade statistics and those of the U.S. as well as other countries.

3. Previous estimates of China's trade statistics for the period before the mid-1980s

Customs statistics were not published before 1984. The only Chinese statistics available for that period are the unreliable FTBS. However, both Japanese IDE and American CIA have tried to estimate statistics for that period. So we will explain these two set of estimates in this section.

Since the late 1950s, estimation of Chinese trade, based on data from its partner trade, was started in Japan and US. In Japan the Institute of Development Economics (IDE) started estimating Chinese trade for every two year from 1964 to 1978. After Chinese official customs statistics is published, IDE made estimation for period of 1979 through 1983, with intention of checking how accurate its estimates were (IDE, 1987). In US Central Intelligence Agency (CIA) estimated China's exports and imports by commodity for several years before China made the customs statistics public (Directorate of Intelligence, Central Intelligence Agency, 1984).

A comparison of the methodologies employed by the IDE and the CIA estimation of China's trade statistics is provided in Table 1. The two estimates have much in common: both are based on trade data provided by China's trading partner countries and the data come from similar sources, namely the trade statistics compiled by the UN, the OECD and individual countries. The classification of commodities is also the same, i.e. SITC-R1. The statistics, however, differ in many other respects, such as the number of Chinese partner countries used in the estimation, the valuation of exports and imports, the years covered, the degree of details, etc.

Table 1: A comparison of IDE and CIA estimation methods of Chinese Trade

	Method	Data sources	Coverage of partner countries	Classification of commodities	Valuation	Time period estimated	Data estimated	Limitations
IDE estimation	Exports are estimated by aggregating the imports of China's trade partner countries. Imports are estimated by aggregating the exports of China's trade partner countries.	Data from OECD, UN and individual trade partner countries.	Differ over time and incomplete due to data availability.	SITC Rev.1	CIF for exports and FOB for imports.	Every two years for the period 1964-1978 and every year for the period 1979-1983	(1) Total exports and imports, (2) their composition by partner country, (3) their composition by commodity; (4) exports and imports by country and commodity, (5) exports and imports by commodity and country.	(1) Poor coverage of partner countries; (2) CIF for exports and FOB for imports; (3) no adjustment for trade through third countries.
CIA estimation	The same as in the IDE estimation. In addition, values are estimated for countries of which trade data with China is not available.	Wider coverage than the IDE estimation.	Relatively better coverage as a result of estimation for countries of which trade data with China is not available.	SITC Rev.1	FOB for both exports and imports.	1970, 1975, and 1978-1982.	(1) Exports and imports for each first-digit SITC-R1 category, (2) exports and imports for some three-digit SITC-R1 category.	Data is less detailed relative to the IDE estimates.

The IDE estimates have many weaknesses, as the IDE has emphasized itself. These weaknesses include: (1) incomplete coverage of China's trading partners, leading to an under-

estimation of both exports and imports; (2) the valuation of Chinese exports on a CIF basis and imports on an FOB basis; (3) the failure to take transactions through third countries into account. The drawback of the CIA estimates when compared with those of the IDE are that (1) they include fewer years of estimation; (2) data on some of China's partner countries are not available; and (3) commodities are classified at a relatively aggregated level.

It is interesting to compare the export and import data estimated by the IDE and the CIA with official Chinese statistics, which were subsequently made public. A comparison, however, is feasible only at a relatively aggregated level of commodity classification.

The results of this exercise are shown in Table 2. Several points emerge from the Table. First, the three statistics are closer in exports than in imports. For instance, the ratio of the CIA's estimate of total exports to the official figure is 0.977 for 1981 and 1.052 for 1982. The closeness is somewhat surprising in light of the large potential for discrepancies between the two statistics due to differences in the time transactions were recorded, statistical errors, etc.

Table 2: A comparison of official Chinese customs statistics and CIA estimates

Year	Total exports and imports (Unit : 1,000US\$)						Ratio					
	Exports			Imports			Exports			Imports		
	CN	IDE	CIA	CN	IDE	CIA	IDE/CN	CIA/CN	CIA/IDE	IDE/CN	CIA/CN	CIA/IDE
1970	2,260,000	1,970,299	2,163,125	2,330,000	1,891,600	2,051,141	0.872	0.957	1.098	0.812	0.880	1.084
1971	2,640,000			2,200,000								
1972	3,440,000	2,962,129		2,860,000	2,359,337		0.861			0.825		
1973	5,820,000			5,160,000								
1974	6,950,000	6,013,119		7,620,000	6,219,249		0.865			0.816		
1975	7,260,000		7,120,634	7,490,000		6,818,344		0.981			0.910	
1976	6,850,000	6,607,584		6,580,000	5,042,083		0.965			0.766		
1977	7,590,000			7,210,000								
1978	9,750,000	9,704,614	10,169,520	10,890,000	9,213,163	10,331,095	0.995	1.043	1.048	0.846	0.949	1.121
1979	13,660,000	13,621,437	13,458,490	15,670,000	13,507,202	14,363,772	0.997	0.985	0.988	0.862	0.917	1.063
1980	18,270,000	18,505,150	18,874,962	19,550,000	17,889,770	19,179,615	1.013	1.033	1.020	0.915	0.981	1.072
1981	22,007,330	20,642,530	21,495,795	22,014,420	16,314,550	17,948,852	0.938	0.977	1.041	0.741	0.815	1.100
1982	22,347,920	20,420,820	23,501,229	19,292,990	14,572,820	16,632,964	0.914	1.052	1.151	0.755	0.862	1.141
1983	22,226,410	19,876,320		21,389,610	16,317,610		0.894			0.763		

Notes: (1) CN stands for Chinese official statistics; IDE and CIA stand for IDE and CIA estimates, respectively;

(2) Chinese official statistics are from administrative reports for the years 1970-1980 and from customs statistics for the years after 1981.

Second, the gap between imports in official Chinese statistics and CIA estimates is relatively small, but there are large gaps between the IDE estimates and the other two statistics. IDE estimates of total imports are well below official Chinese statistics, especially in the later years. Two factors contribute to this discrepancy. One is the valuation of exports and imports: Official Chinese statistics use CIF to measure imports, while the CIA converted FOB data to CIF data using information on trade cost; in contrast, IDE valued imports on an FOB basis. The second factor is that official customs statistics cover all, or nearly all, trading partners, while the IDE estimates do not include a number of trading partners due to problems with data availability. The CIA estimates also tend to underestimate Chinese total imports when compared with the official customs statistics, but the gap is much smaller than in the IDE estimation. It seems that the closeness of the CIA estimates to China's customs statistics, relative to the IDE estimates, mainly is the result of the better coverage of trade partners in the CIA estimation.

Third, the discrepancy between both the IDE and CIA estimates and official statistics for the period before 1980 is very similar to that for period after 1981 in terms of magnitude and the direction of the discrepancy, indicating that the figures of total exports and imports based on FTBS are reliable.

4. New Database on China's Trade: by Commodity

In order to solve various problems with China's existing trade statistics, we newly construct a database for China's trade during the periods 1952-1964 and 1981-2000. We use the SITC-R1 (3-digit level) for the classification of commodities. The sources and the method of constructing the database are as follows.

1) 1952-1964

We obtained the original data of China's Customs statistics from the National Bureau of Statistics of China. The statistics are classified on the basis of China's original industry code at the most disaggregated level. We aggregated the original data into SITC-R1 classification (3-digit level), using our own concordance table for China's Customs statistics and SITC-R1.³

2) 1981-1987

We obtain the original data of China's Customs statistics from the National Bureau of Statistics of China classified according to the SITC-R2 (6-digit level). The data are aggregated into SITC-R1 classifications at the 3-digit level (using the concordance table developed by IDE).

3) 1988-2000

For the period 1988-2000 we rely on the database constructed by Mr. Yosuke Noda of the IDE. The database is based on the COMTRADE database compiled by the United Nations, which uses the SITC-R2 (6-digit level) commodity classification for the period 1988-1991 and the SITC-R3 (6-digit level) commodity classification for the period 1992-2000. Mr. Noda converted and aggregated each commodity in SITC-R2 and R3 into SITC-R1 3-digit level, using the concordance table developed by IDE. In cases where a commodity in SITC-R2 or R3 falls into more than one category in the SITC-R1 the value of the commodity is equally divided between SITC-R1 categories.

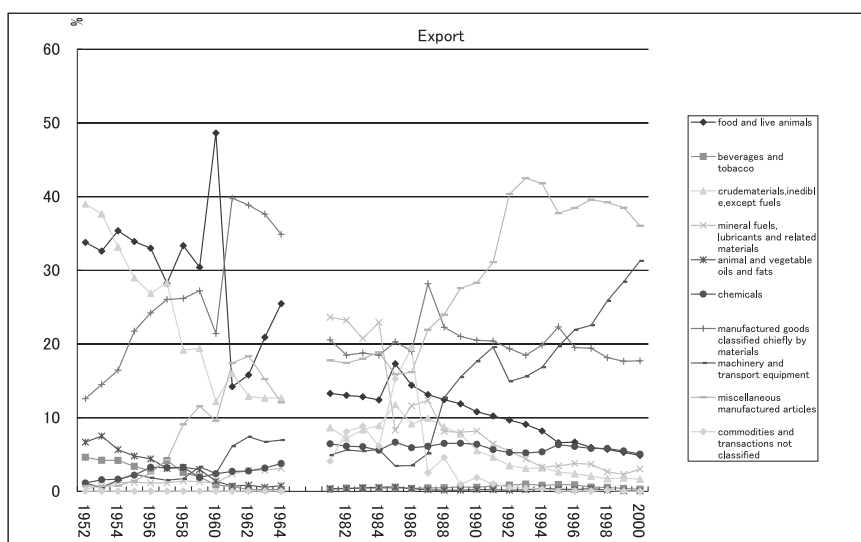


Figure 1

³ The concordance table for original commodity classification and SITC-R1 classification is available upon request.

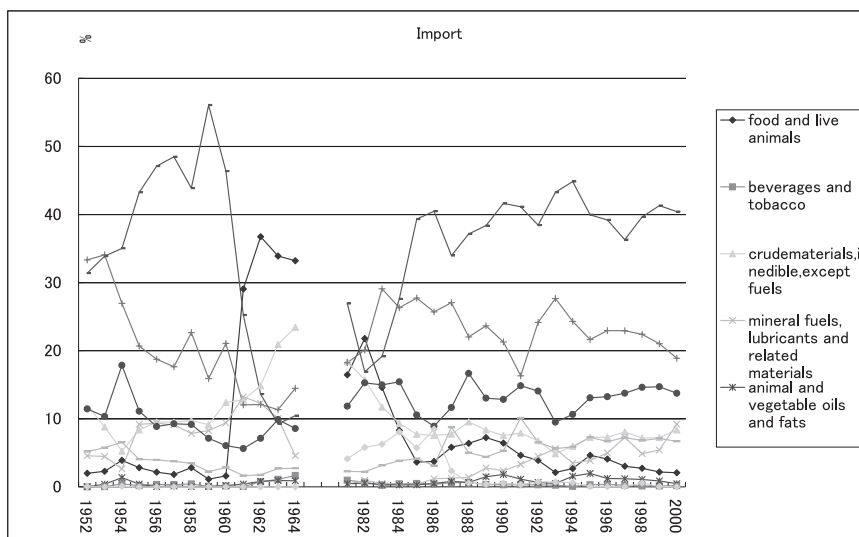


Figure 2

Appendix Tables A1-A5 present the estimation results of China's trade at the SITC-R1 2-digit level aggregated from our 3-digit level data.⁴ Figures 1 and 2 present the shares of export and import commodities respectively for 1952-64 and 1981-2000 at the SITC-R1 1-digit level. Two messages are evident from these figures. The figures allow two major observations. The first is a shift in China's export orientation. While in the 1950s, food products (SITC-0) and minerals (SITC-2) accounted for the largest share of exports, a gradual increase in the share of labor-intensive products (SITC-8) can be observed during the 1960s.

The second is that China imported machinery (SITC-7) as early as the 1950s, indicating that China already put a high priority on the import of capital goods fifty years ago. Notice, however, this observation is obscured by imports of food products around 1962 because of the severe famine.

5. Work to be done in the future

While the trade data we have compiled should help in long-term analyses of Chinese trade, much remains to be done.

For example, in the present paper, we did not attempt to estimate trade data for 1966-1980. As we have already explained in section 2, Chinese government did not compile its Customs statistics for 1966-1978 and probably it is impossible to get official statistics. Possible ways around this problem would be to revise the CIA or the IDE estimates or to compile entirely new estimates following the CIA and/or IDE methodology. Fortunately, since we have detailed trade data based on China's official Customs statistics (which have not been published) for the 1950s and the 1960s and the early 1980s, we can check reliability and biases of the CIA and the IDE estimates for these periods. Appendix Table A6 shows a comparison of our data based on the customs statistics with the CIA estimates at the two-digit level.

⁴ Data at the 3-digit SITC-R1 and by trade partner for 1952-1964 and 1981-2000 are available upon request.

The comparison shows that the quality of the CIA estimates is very high. Based on this type of comparison, we could create our own estimates on China's trade structure for the period 1966-1980.

A second task for the future is to compare our results with Chinese trade statistics for the pre-war period.

As a part of the Ministry of Education COE Program, "Asia Long-Term Historical Statistical Database" headed by Konosuke Odaka of Hosei University and the Ministry of Education 21st Century COE Program "Research Unit for Statistical Analysis in Social Sciences" headed by Osamu Saito of Hitotsubashi University, Professor Hajime Kose of Ryukoku University has already compiled trade statistics for China by country and by commodity at the SITC-R1 three-digit level for the pre-war period. A comparison of his trade statistics with our own may provide valuable insights into how China's development process in the 1940s and 1950s was affected by the Japanese invasion, China's Civil War and the Communist Revolution.

References

- Central Intelligence Agency (CIA), Directorate of Intelligence 1984. *China: International Trade Annual Statistical Supplement*, Washington, D.C.: CIA.
- Institute of Developing Economies (IDE). (various years) *Foreign Trade of China (Chugoku no Boueki)*, Tokyo: Institute of Developing Economies (in Japanese).
- Institute of Developing Economies (IDE). 1987. *Trade Statistics of China 1970-1985: Utilization and Appraisal (Chugoku no Boueki Toukei, 1970-1985: Riyo to Hyoka)*, Tokyo: Institute of Developing Economies (in Japanese).

Table A1: China's exports by commodity: SITC-R1, 2-digit level, 1952-1964. (unit: 1,000 Yuan)

SITC-R1 Code (2-digit)	Name of items	1952	1953	1954	1955	1956	1957	1958	1959	1960	1961	1962	1963	1964
00	Live animals	56415	46301	74366	78514	73946	73897	71794	62493	57060	30087	44616	83495	124894
01	Meat and preparations	57334	133370	265308	325263	198752	198752	356650	313288	199183	58716	42573	48457	211273
02	Dairy products and eggs	51305	74280	101968	97226	131059	145742	199004	74270	42386	27801	49875	90491	85877
03	Fish and fish preparations	14341	18336	19625	28587	34933	48222	63305	98907	57047	35953	46138	63950	106970
04	Cereals and cereal preparations	169319	270181	270746	371083	476389	244644	521465	790231	496636	130554	214170	215826	247364
05	Fruit and vegetables	391187	409634	459077	546305	579528	622192	686969	785585	3562953	234117	210861	299554	368891
06	Sugar, sugar preparations and honey	415	1343	1876	5554	6229	8432	33663	28110	22755	41271	41793	82650	116107
07	Coffee, tea, cocoa, spices and manufactures thereof	96332	89312	98033	119623	132056	134273	157781	153183	116000	84233	80426	87374	100019
08	Feeding-stuff for animals (not including unmilled cereals)	30872	19737	5708	4476	5133	5504	3645	2717	4549	1966	1284	2873	5862
09	Miscellaneous food preparations	617	599	777	1164	3093	4813	8604	10928	12189	6982	6909	7305	10835
11	Beverages	1684	1165	1469	3267	3326	3352	5673	7243	5170	4813	6765	7321	9037
12	Tobacco and tobacco manufactures	117267	135091	152662	154574	143887	216662	156609	139856	75885	25238	5291	5164	3392
21	Hides, skins and fur skins, undressed	19783	21049	20022	25120	38539	38539	27090	20301	15035	12269	22276	27517	27517
22	Oil-seeds, oil nuts and oil kernels	33251	395191	325584	380466	332517	223741	90205	104371	63798	7149	7691	9164	24728
23	Crude rubber (including synthetic and reclaimed)	37491	79695	61666	17060	74660	215816	114124	113609	54771	13137	11703	12144	13113
24	Wood, lumber and cork	4103	2788	18746	6983	8994	8771	9651	6511	5674	2478	2882	2704	2041
25	Pulp and waste paper	2	0	0	0	0	35	0	5	3	0	0	0	0
26	Textile fibers (not manufactured into yarn, thread or fabrics) and their waste	237484	361076	331937	377403	422999	376370	329672	558203	478278	255297	197977	214599	250998
27	Crude fertilizers and crude minerals (excluding coal, petroleum and precious stones)	24623	22380	35347	51739	81066	89443	85395	71812	58429	56290	49771	53234	62356
28	Metalliferous ores and metal scrap	157302	204022	244321	288168	318342	380062	326018	351136	293918	285996	217292	168245	118315
29	Crude animal and vegetable materials, n.e.s.	189310	141897	178620	201835	162955	156800	220525	219297	169929	99767	102980	134153	187905
32	Coal, coke and briquettes	8107	22041	40363	45875	57678	58305	86133	96233	103118	107568	125002	129559	147760
33	Petroleum and petroleum products	301	901	4454	10345	2773	2202	3295	25426	929	1434	7435	10684	21376
34	Gas, natural and manufactured	0	0	0	0	0	0	0	0	0	0	0	0	0
35	Electric energy	0	0	0	0	0	0	0	0	0	0	0	0	0
40	Animal oils and fats	305	397	5097	7906	5629	1488	1774	1630	1136	705	252	160	600
41	Fixed vegetable oils and fats	169355	293469	198552	212072	235568	158619	203608	218453	129149	31115	38384	25771	39472
42	Animal and vegetable oils and fats, processed, and waxes of animal or vegetable origin	1615	1747	4135	3489	3993	2401	1928	1389	720	252	367	573	1194
43	Chemical elements and compounds	8888	18222	18868	38951	82820	51796	68911	48340	115543	47350	39689	41599	69559
51	Mineral tar and crude chemicals from coal, petroleum and natural gas	7250	6625	9267	15310	16667	16124	30248	23176	38514	24960	25428	1536	4743
52	Dyeing, tanning and colouring materials	1223	2422	5644	10037	10433	18902	11521	11118	10777	15563	16377	17813	25988
53	Medicinal and pharmaceutical products	5390	15947	14181	19230	19942	38364	38313	34203	27096	21760	23708	27065	27588
54	Essential oils and perfume materials, toilet, polishing and cleansing preparations	0	0	20	252	170	287	3721	886	71	24	1997	34	3264
55	Fertilizers, manufactured	183	367	3183	5144	3046	1954	1632	2117	3397	3828	6838	13973	7249
56	Explosives and pyrotechnic products	34	42	461	915	55	518	823	16712	11632	8987	10905	11842	17580
57	Plastic materials, regenerated cellulose and artificial resins	6434	7429	27979	9733	39938	37847	46932	2989	16320	652	3077	13871	18777
58	Chemical materials and products, n.e.s.	15059	24520	22985	34120	64857	64192	66944	53047	36579	28438	39799	78392	114790
59	Leather, leather manufactures, n.e.s. an dressed fur skins	7361	2603	1126	2080	8955	5441	47539	46945	41378	36286	50849	57900	45086
60	Rubber manufactures, n.e.s.	320	1226	1139	2666	3471	9603	17807	11603	8272	12371	14005	11910	18282
61	Wood and cork manufactures (excluding furniture)	4982	10737	14285	38068	39425	39756	44481	46454	57544	52414	57229	59882	59882
62	Paper, paperboard and manufactures thereof	110667	154376	241929	454976	651156	794190	896839	1306436	1251169	1176802	1120705	1093352	1026131
63	Textile yarn, fabrics, made-up articles and related products	17450	25240	32770	42187	72635	109172	130655	114775	118590	123770	139830	131128	139402
64	Non-metallic mineral manufactures, n.e.s.	30354	23200	59763	158403	193280	80227	133789	97482	125458	138358	159710	207624	303304
65	Iron and steel	135730	226182	219609	266096	242675	247622	290532	338336	363281	231661	210812	173588	148618
66	Non-ferrous metals	1568	4291	9721	14104	15780	18880	26144	26737	22217	21494	28468	25280	31831
67	Manufactures of metal, n.e.s.	7545	3084	13579	17336	30992	39791	176117	149395	235854	290574	471091	287569	287569
71	Machinery, other than electric	1555	4255	24298	18568	16568	12415	22718	33236	25057	33934	32429	60582	60582
72	Electrical machinery, apparatus and appliances	19705	9895	18516	72673	50434	26892	23107	40395	52940	11044	23719	14028	28125
73	Transport equipment	14	44	280	321	992	2000	5850	4791	1903	5705	7879	8841	5656
81	Suitcase, trunks, handbags and lighting fixtures an fittings	2358	2261	2524	3044	3463	3994	4491	5297	6022	5532	5430	7250	8578
82	Furniture	4838	6555	888	778	5364	7206	9706	5794	2468	1170	784	1939	2604
83	Travel goods, handbags and similar articles	258	258	655	888	778	5364	9706	5794	2468	1170	784	1939	2604
84	Clothing	1029	5	16	4013	14935	30015	140307	142763	159489	61176	57796	30558	482378
85	Footwear	10452	12362	10130	20417	34681	50517	99619	88018	55349	81039	90209	97288	106534
86	Professional, scientific and controlling instruments; photographic and optical goods	288	434	441	780	963	1406	1225	1156	1356	1109	1785	2148	2523
87	Miscellaneous manufactured articles, n.e.s.	2571142	3262198	3668939	4665070	5334563	5264424	6322513	7494479	9397520	4589733	4676505	4881267	5405604
88	Commodities and transactions not classified according to kind													
90	Total													

China's Long-Term International Trade Statistics: by Commodity, 1952-1964 and 1981-2000

Table A2.-China's imports by commodity: SITC-RI, 2-digit level, 1952-1964 (unit: 1,000 Yuan)

SITC-RI Code (2-digit)	Name of items	1952	1953	1954	1955	1956	1957	1958	1959	1960	1961	1962	1963	1964
00	Live animals	463	7,436	4,627	6,887	11,871	10,768	33,630	21,918	25,693	13,124	21,232	22,786	2,118
01	Meat and preparations	2	5	1,398	361	22	0	2,597	87	777	746	1,223	1,151	20
02	Dairy products and eggs	63	694	2,645	299	464	175	14,789	15,658	10,377	5,391	6,903	5,882	230
03	Fish and fish preparations	1,704	4,457	55,109	6,565	7,277	9,101	17,389	12,055	5,516	848,330	885,600	918,401	1,145,669
04	Cereals and cereal preparations	75	79	1,841	23,992	2,539	3,944	31,900	12,608	14,002	16,208	21,854	23,084	18,798
05	Fruit and vegetables	30	1,220	2,331	10,538	1,901	2,089	7,823	16,813	17,421	44,115	262,896	187,673	158,855
06	Sugar, sugar preparations and honey	43,370	40,809	22,906	43,058	9,992	42,977	50,638	12,530	37,402	44,115	6,533	4,220	14,054
07	Coffee, tea, cocoa, spices and manufactures thereof	2,230	5,502	73,856	8,325	9,956	9,156	7,250	8,029	1,077	1,196	960	1,124	1,091
08	Feeding-stuff for animals (not including unmilled cereals)	0	0	0	0	0	0	1,596	1,391	1,077	35	295	50	85
09	Miscellaneous food preparations	0	0	318	31	54	17	40	69	20	35	295	50	85
11	Beverages	67	16	6,765	350	209	0	12	48	1	0	24,683	37,754	67,766
12	Tobacco and tobacco manufactures	143	776	12,358	6,021	14,119	14,521	23,096	5,040	8,300	1,511	603	556	76
21	Hides, skins and fur skins, undressed	0	5	16	356	1,076	1,230	675	62	179	1,243	603	725	10,265
22	Oil-seeds, oil nuts and oil kernels	562	1,142	1,913	16,432	10,563	10,563	9,037	4,564	2,252	16,680	155,613	157,283	181,067
23	Crude rubber (including synthetic and reclaimed)	56,642	158,842	110,546	78,035	222,181	217,979	207,845	275,598	294,332	157,661	155,613	157,283	181,067
24	Wood, lumber and cork	887	2,467	1,667	3,884	4,259	4,911	7,515	14,773	13,223	15,482	25,966	44,753	48,013
25	Pulp and waste paper	20,475	26,195	35,117	2,313	4,428	6,448	11,339	4,082	19,465	30,121	20,598	22,658	45,387
26	Textile fibers (not manufactured into yarn, thread or fabrics) and their waste	202,221	34,200	44,955	199,198	123,592	139,849	181,712	219,233	339,457	242,756	188,497	374,920	527,355
27	Crude fertilizers and crude minerals (excluding coal, petroleum and precious stones)	3,198	4,177	6,350	6,292	9,715	4,240	21,609	44,729	44,938	38,560	20,127	39,413	60,871
28	Metalliferous ores and metal scrap	31	234	96	602	965	7,389	16,807	26,466	36,477	29,366	38,225	44,219	47,069
29	Crude animal and vegetable materials, n.e.s.	5,414	5,914	23,408	10,634	19,881	20,338	64,721	52,190	36,808	52,556	26,422	27,548	29,580
32	Coal, coke, and briquettes	53	3	9	600	10,640	3,167	27,810	56,152	59,853	68,099	65,159	52,074	56,504
33	Petroleum and petroleum products	109,719	118,169	111,969	332,911	384,670	392,465	391,770	523,649	535,999	537,703	338,135	291,988	128,610
34	Gas, natural and manufactured	0	0	0	0	0	0	0	0	0	0	0	0	0
35	Electric energy	0	0	0	0	0	0	0	0	0	0	0	0	0
40	Animal oils and fats	0	4	28,635	78	22	205	406	1,716	7,986	10,948	13,162	10,969	10,322
41	Fixed vegetable oils and fats	556	9,889	29,082	14,359	493	5,056	459	2,884	3,691	10,948	12,651	20,354	25,937
42	Animal and vegetable oils and fats, processed, and waxes of animal or vegetable origin	158	38	22	18	3	308	0	212	121	238	885	304	138
43	Chemical elements and compounds	37,805	37,097	73,265	80,673	26,127	40,129	50,710	90,687	75,833	43,555	29,187	31,476	43,255
51	Mineral tar and crude chemicals from coal, petroleum and natural gas	476	1,366	19,975	781	540	1,335	908	1,057	393	73	7,862	4,324	32,708
52	Dyeing, tanning and colouring materials	801,184	42,059	32,124	95,752	20,061	43,097	44,282	57,598	35,835	23,818	21,917	20,581	9,847
53	Medicinal and pharmaceutical products	75,401	115,205	184,873	54,839	40,983	51,772	52,593	29,967	16,192	12,491	10,368	9,847	8,881
55	Essential oils and perfume materials, toilet, polishing and cleansing preparations	594	693	8,061	6,694	2,153	2,334	2,153	6,049	3,459	865	1,687	9,218	17,573
56	Fertilizers, manufactured	60,478	63,429	111,899	141,845	224,190	195,741	254,805	180,389	147,994	117,215	118,863	223,832	178,041
57	Explosives and pyrotechnic products	3,625	4,554	6,247	1,771	5,542	10,795	22,396	55,531	37,359	31,684	30,210	18,246	29,185
58	Plastic materials, regenerated cellulose and artificial resins	2,496	5,158	11,258	8,333	8,869	15,797	15,915	23,311	28,281	6,547	6,248	9,256	15,302
59	Chemical materials and products, n.e.s.	13,941	3,990	21,089	12,651	45,917	41,673	46,918	54,007	38,541	21,175	10,213	9,116	16,015
61	Leather, leather manufactures, n.e.s. an dressed fur skins	1,591	136	30,901	641	201	2,009	553	1,118	532	3,420	3,539	3,026	4,695
62	Rubber manufactures, n.e.s.	51,330	17,834	18,999	7,400	4,748	4,097	4,779	4,141	3,454	475	1,377	1,882	1,510
63	Wood and cork manufactures (excluding furniture)	231	648	45,821	341	380	159	313	744	753	10	1,320	1,031	2,723
64	Paper, paperboard and manufactures thereof	115,199	90,895	214,193	55,142	54,843	46,689	16,807	12,545	13,280	22,775	14,904	16,043	23,956
65	Textile yarn, fabrics, made-up articles and related products	110,859	57,490	72,449	98,152	174,434	154,591	152,099	140,995	102,505	66,406	44,431	49,333	89,031
66	Non-metallic mineral manufactures, n.e.s.	10,949	11,721	129,123	9,623	33,574	16,880	16,998	20,824	29,669	13,443	8,106	15,423	31,679
67	Iron and steel	357,106	550,163	419,857	471,178	420,530	436,837	819,750	616,680	734,342	314,442	217,855	228,029	305,649
68	Non-ferrous metals	83,833	111,006	146,253	69,132	69,931	75,408	164,303	274,187	407,119	110,387	88,752	61,229	114,148
69	Manufactures of metal, n.e.s.	70,213	62,222	39,496	33,977	31,533	33,031	42,299	45,310	45,310	21,276	17,573	13,713	10,481
71	Machinery, other than electric	470,131	599,127	1,113,431	1,503,519	1,713,970	1,503,519	3,001,433	2,429,879	898,340	296,989	202,271	254,407	254,407
72	Electrical machinery, apparatus and appliances	137,818	129,062	315,232	157,312	192,862	147,100	208,586	291,111	177,318	92,696	44,931	27,582	38,804
73	Transport equipment	146,549	168,959	298,157	300,018	295,390	245,234	417,565	635,221	336,642	165,527	106,276	87,403	129,924
81	Sanitary, plumbing, heating and lighting fixtures and fittings	2,811	565	1,444	8	529	132	143	0	4	0	4	34	0
82	Furniture	35	0	8	8	56	35	318	222	451	153	331	267	93
83	Travel goods, handbags and similar articles	35	0	15	0	8	6	0	1	0	0	0	1	0
84	Clothing	477	9	162	312	631	197	331	56	102	3	1,057	4,608	5,273
85	Footwear	1,041	303	4	168	28	0	4	4	0	0	0	95	0
86	Professional, scientific and controlling instruments; photographic and optical goods	114,173	144,087	157,874	132,609	147,960	139,242	171,334	141,074	160,402	60,924	45,842	77,753	93,726
89	Miscellaneous manufactured articles, n.e.s.	6,029	7,512	119,094	12,212	17,831	22,751	13,300	15,722	18,590	14,520	10,268	9,481	11,755
90	Commodities and transactions not classified according to kind	2,404,252	2,647,549	4,224,626	3,631,864	4,229,749	4,345,629	5,332,524	7,004,912	6,349,026	4,583,945	3,289,078	3,453,669	4,051,636
Total		2,404,252	2,647,549	4,224,626	3,631,864	4,229,749	4,345,629	5,332,524	7,004,912	6,349,026	4,583,945	3,289,078	3,453,669	4,051,636

Table A3: China's exports and imports by commodity, SITC-R1, 2-digit level, 1981-1987 (unit: 1,000 Yuan)

SITC-R1 Code	2-digit	Name of items	1981	1982	1983	1984	1985	1986	1987	Imports	1983	1984	1985	1986	1987
01	01	Live animals	634,929	683,976	664,721	701,998	800,123	1,041,322	1,294,423	4,260	4,907	5,666	6,420	7,178	8,066
02	02	Meat and preparations	621,783	690,926	885,621	1,005,804	1,362,921	1,739,744	1,947,322	3,890	1,554	1,554	2,732	3,738	4,329
03	03	Dairy and eggs	132,049	164,675	180,921	164,675	180,921	242,439	566,372	31,231	96,872	35,553	53,229	96,103	170,879
04	04	Fish and fish preparations	632,260	613,116	581,338	678,143	845,940	1,233,595	2,396,557	24,557	41,200	46,903	72,419	130,504	216,848
05	05	Cereals and cereal preparations	494,205	414,557	422,071	1,026,110	3,181,105	3,105,529	2,157,682	5,070,242	6,057,531	4,855,020	3,992,346	2,853,278	6,288,337
06	06	Fruit and vegetables	1,411,850	1,518,975	1,588,071	1,842,079	2,467,753	3,840,610	4,809,156	79,363	119,542	58,834	76,807	150,249	396,886
07	07	Sugar, sugar preparations and honey	252,130	181,767	149,394	121,734	233,908	445,309	580,537	744,770	1,218,705	870,103	575,772	831,737	1,114,543
08	08	Coffee, tea, copra, spices and manufactures thereof	481,484	621,544	704,675	1,006,507	1,633,717	1,823,407	2,442,249	3,521,335	4,413,998	107,722	106,710	121,532	750,766
09	09	Feeding-stuff for animals (not including unrolled cereals)	150,979	204,675	389,232	502,263	709,053	1,460,471	2,019,481	38,191	88,538	150,276	204,274	248,774	338,442
10	10	Miscellaneous food preparations	40,351	114,924	122,841	155,976	207,581	270,118	433,699	8,238	8,204	22,923	40,391	60,114	83,976
11	11	Tobacco and tobacco manufactures	59,207	65,233	82,126	88,781	103,880	145,453	218,845	346,500	233,088	10,312	547,902	642,544	101,333
12	12	Hides, skins and fur skins, undressed	152,991	171,923	175,542	258,026	355,778	427,381	509,744	1,021,116	191,506	110,675	91,281	304,866	265,309
21	21	Oil-seeds, oil nuts and oil kernels	704,587	371,293	652,463	1,094,383	1,418,572	1,979,197	2,526,660	299,552	211,795	2,056	2,395	2,711	218,928
22	22	Crude rubber (including synthetic and reclaimed)	7,124	7,262	9,629	10,926	11,106	6,080	9,954	335,868	334,171	533,251	704,194	649,565	933,458
23	23	Wood, lumber and cork	19,465	21,225	19,783	25,457	28,128	66,280	132,880	132,880	132,880	132,880	132,880	132,880	132,880
24	24	Pulp and waste paper	255	17	0	2,016	747	5,135	5,519	6,425	408,534	553,001	622,655	660,031	7,502,575
25	25	Textile fibers (not manufactured into yarn, thread or fabrics) and their waste	759,652	1,091,247	1,326,346	2,038,835	3,408,809	4,021,038	5,632,236	4,445,128	2,872,020	1,769,521	1,667,456	3,495,933	4,209,178
26	26	Crude fertilizers and crude minerals (excluding coal, petroleum and precious st	330,513	387,051	373,423	485,773	710,465	929,192	1,346,895	1,391,552	1,601,077	197,359	190,336	162,360	127,693
27	27	Metalliferous ores and metal scrap	533,572	206,648	298,044	287,408	564,022	746,026	1,061,039	261,758	348,065	446,393	678,236	1,092,388	1,954,457
28	28	Crude animal and vegetable materials, n.e.s.	668,911	705,582	821,817	988,852	1,203,832	1,729,898	2,406,975	88,335	185,360	150,745	176,699	293,121	481,017
32	32	Coal, coke, and briquettes	593,780	705,524	633,173	675,917	983,456	1,493,399	2,001,559	94,040	116,013	113,201	139,980	187,387	303,706
33	33	Petroleum and petroleum products	8,093,874	8,902,527	8,458,539	12,618,894	4,437,816	11,070,574	14,903,499	18,079	186,822	55,579	92,410	127,502	1,479,429
34	34	Gins, natural and manufactured	942	1,574	2,065	10,629	9,766	8,001	9,692	269	954	1,619	3,267	6,085	6,912
35	35	Electric energy	0	0	0	0	0	0	0	0	0	0	0	0	
41	41	Animal oils and fats	13,324	11,132	166	200	200	299	703	25,768	35,777	41,902	54,754	70,378	177,019
42	42	Fixed vegetable oils and fats	144,280	140,378	204,453	317,277	396,164	402,865	296,365	45,568	54,314	33,955	50,845	91,079	253,212
43	43	Animal and vegetable oils and fats, processed, and waxes of animal or vegetable	2,033	2,430	2,006	1,910	2,921	2,526	6,046	119,631	142,995	103,050	125,451	263,592	636,971
44	44	Chemical elements and compounds	1,159,349	1,166,463	1,219,497	1,469,234	2,017,765	3,059,865	3,696,919	2,043,779	2,583,331	2,894,954	3,332,774	5,177,672	5,504,114
51	51	Mineral tar and crude chemicals from coal, petroleum and natural gas	26,201	204,077	81,981	35,416	87,896	57,097	225,823	11,445	16,883	44,951	84,459	121,399	149,570
52	52	Dyeing, tanning and colouring materials	110,762	139,693	156,716	192,419	229,480	435,583	658,383	194,881	286,656	136,537	181,182	414,810	684,579
53	53	Medicinal and pharmaceutical products	428,310	447,785	524,548	608,773	806,330	1,109,307	1,508,372	31,523	68,322	149,771	304,202	535,303	863,474
54	54	Essential oils and perfume materials, toilet, polishing and cleansing preparations	184,341	176,345	206,348	338,346	379,207	446,372	531,130	1,029,208	1,101,572	1,390,426	2,065,308	2,284,123	2,840,400
55	55	Explosives and pyrotechnic products	234	0	0	683	5,256	35,130	44,672	1,029,208	1,101,572	1,390,426	2,065,308	2,284,123	2,840,400
56	56	Plastic materials, prepared cellulose and artificial resins	101,960	121,879	136,070	374,680	335,266	538,326	679,960	1,580	802	1,389	5,764	3,451	765
57	57	Leather, leather manufactures, n.e.s. an dressed fur skins	81,421	56,827	89,981	97,317	132,970	203,485	303,347	841,845	1,238,006	1,238,006	1,238,006	1,238,006	1,238,006
58	58	Chemical materials and products, n.e.s.	280,410	216,556	234,485	231,760	356,140	516,629	693,053	149,272	168,714	528,353	703,796	646,216	899,150
59	59	Rubber manufactures, n.e.s.	40,354	109,704	121,116	121,042	153,764	296,932	378,210	7,790	12,065	16,416	30,513	44,658	76,683
62	62	Wood and cork manufactures (excluding furniture)	51,534	56,187	53,334	58,559	75,577	135,905	330,306	203,512	360,233	219,877	429,558	772,971	2,024,294
63	63	Paper, paperboard and manufactures thereof	264,668	267,543	308,559	384,152	448,793	684,897	940,803	625,719	409,438	394,413	536,844	1,287,211	1,948,964
64	64	Textile yarn, fabrics made-up articles and related products	4,183,143	4,309,665	5,325,307	6,753,273	9,601,355	14,724,715	22,228,340	2,729,871	1,525,708	983,414	4,503,430	5,101,587	7,246,592
65	65	Non-metallic mineral manufactures, n.e.s.	637,626	601,156	559,325	573,427	672,877	1,110,760	1,636,833	2,656,924	2,805,205	411,700	503,763	1,272,576	1,272,576
66	66	Iron and steel	871,565	902,379	902,379	286,268	348,209	403,521	570,248	626,526	6,970,908	9,773,167	21,018,724	23,544,598	17,866,331
67	67	Non-ferrous metals	1,855,799	326,374	289,600	363,139	617,628	908,191	2,189,981	3,047,591	2,534,395	4,848,529	3,718,427	3,544,230	2,741,300
68	68	Manufactures of metal, n.e.s.	902,839	966,124	1,051,895	1,251,051	1,927,676	2,969,203	86,640	80,843	107,414	3,047,591	1,554,354	1,665,113	1,929,358
71	71	Machinery, other than electric	497,585	548,787	600,665	526,072	1,003,043	1,165,121	1,776,789	1,776,789	1,776,789	1,776,789	1,776,789	1,776,789	1,776,789
72	72	Electrical machinery, apparatus and appliances	552,719	588,902	790,387	1,265,557	1,827,731	2,657,577	3,680,266	1,307,950	1,121,586	1,541,775	1,847,376	1,847,376	1,847,376
73	73	Transport equipment	755,814	1,182,156	1,147,062	1,436,800	1,016,380	1,093,266	1,207,873	6,860,057	3,146,206	20,800	49,716	103,372	139,709
81	81	Sanitary, plumbing, heating and lighting fixtures and fittings	106,286	102,832	92,891	90,673	113,320	170,177	170,177	9,640	13,444	20,800	49,716	135,512	165,358
82	82	Furniture	236,906	262,676	241,832	283,515	269,259	377,016	15,990	7,247	10,961	27,011	47,546	103,372	139,709
83	83	Travel goods, handbags and similar articles	3,374,919	3,901,105	4,410,950	6,328,209	6,102,054	539,129	1,066,917	366	654	1,015	3,487	7,900	6,657
84	84	Clothing	378,399	427,080	438,427	565,730	765,088	1,008,738	1,808,738	654	497	1,104	5,182	22,175	5,599
85	85	Footwear	265,402	284,105	387,958	495,725	267,106	509,631	581,799	487,588	896,668	1,345,331	2,908,597	2,783,719	6,203,594
86	86	Professional, scientific and controlling instruments, photographic and optical g	2,019,670	2,047,262	2,084,663	2,835,663	2,641,060	4,521,349	9,472,755	202,277	269,265	374,595	910,566	1,988,130	6,491,762
89	89	Miscellaneous manufactured articles, n.e.s.	3,003,396	6,692,368	7,750,924	7,131,249	20,011,825	42,099,270	34,545,325	3,027,744	4,149,722	5,285,562	9,067,239	14,415,735	25,379,488
90	90	Commodities and transactions not classified according to kind	38,255,520	44,729,518	47,708,174	61,621,336	75,555,526	129,560,175	137,185,155	38,273,500	37,829,047	44,823,259	67,030,406	102,513,211	159,786,526

Table A5: China's imports by commodity, SITC-R1, 2-digit level, 1981-2000 (unit: 1,000 US\$)

SITC-R1 Code	Name of items	1981	1982	1983	1984	1985	1986	1987	1988	1989	1990	1991	1992	1993	1994	1995	1996	1997	1998	1999	2000	
00	Live animals	2,506	2,597	2,860	3,646	18,860	12,288	12,572	16,519	10,941	13,618	10,685	20,007	17,200	18,332	28,242	34,699	31,897	42,446	46,283	41,846	
01	Meat and preparations	229	822	1,380	3,180	6,813	9,160	18,042	26,236	47,027	53,987	62,441	63,919	75,132	95,739	102,618	169,853	165,545	150,705	150,266	163,958	
02	Dairy products and eggs	18,371	51,225	17,956	22,844	32,688	49,530	48,434	70,189	68,805	80,942	68,734	66,616	56,317	80,848	60,719	59,095	66,191	86,487	160,621	215,651	215,651
03	Fish and fish preparations	14,445	21,799	25,688	31,215	44,389	47,460	58,292	91,590	118,027	102,405	122,405	121,536	102,376	118,811	60,720	59,095	66,191	86,487	160,621	215,651	215,651
04	Cereals and cereal preparations	2,066	3,260	2,974	3,107	3,107	3,107	3,107	3,107	3,107	3,107	3,107	3,107	3,107	3,107	3,107	3,107	3,107	3,107	3,107	3,107	3,107
05	Starch, sugar preparations and products	64,818	439,446	317,007	282,094	217,601	217,601	217,601	217,601	217,601	217,601	217,601	217,601	217,601	217,601	217,601	217,601	217,601	217,601	217,601	217,601	217,601
06	Coffee, tea, cocoa, spices and medicinal plants	3,108	74,814	54,405	45,996	41,337	118,860	91,025	88,789	63,649	304,656	599,831	403,409	307,335	61,224	61,224	85,470	85,470	88,308	87,059	114,327	175,854
07	Feeding-stuff for animals (not in primary forms)	22,466	48,364	75,897	88,649	84,417	98,099	115,577	174,100	204,477	24,341	46,549	56,127	46,242	58,292	62,793	79,460	90,108	1,406,033	620,899	909,979	1,406,033
08	Miscellaneous food preparations	3,006	9,079	11,577	17,410	20,447	24,341	24,341	24,341	24,341	24,341	24,341	24,341	24,341	24,341	24,341	24,341	24,341	24,341	24,341	24,341	24,341
09	Alcoholic beverages	3,006	9,079	11,577	17,410	20,447	24,341	24,341	24,341	24,341	24,341	24,341	24,341	24,341	24,341	24,341	24,341	24,341	24,341	24,341	24,341	24,341
10	Non-alcoholic beverages	10,186	12,337	41,066	106,872	186,161	157,320	145,313	305,566	171,240	130,033	165,888	204,272	240,362	32,443	33,945	45,984	58,292	105,715	150,705	150,705	164,642
11	Mineral products	60,008	101,326	101,326	55,897	103,096	103,096	103,096	103,096	103,096	103,096	103,096	103,096	103,096	103,096	103,096	103,096	103,096	103,096	103,096	103,096	103,096
21	Hides, skins and furs, and skins of other animals	176,207	112,661	1,038	1,038	1,038	63,457	68,113	70,417	83,963	20,836	32,888	151,870	189,374	208,245	410,870	369,304	405,022	400,386	407,917	637,773	637,773
22	Other skins and furs, and skins of other animals	176,207	112,661	1,038	1,038	1,038	63,457	68,113	70,417	83,963	20,836	32,888	151,870	189,374	208,245	410,870	369,304	405,022	400,386	407,917	637,773	
23	Wool, raw and in the form of top	290,334	50,988	50,988	59,771	714,364	873,511	670,765	585,693	480,239	366,233	411,316	600,836	290,543	385,463	505,983	795,120	619,336	515,368	595,244	974,379	974,379
24	Wool, combed and in the form of top	248,080	59,771	59,771	714,364	873,511	670,765	585,693	480,239	366,233	411,316	600,836	290,543	385,463	505,983	795,120	619,336	515,368	595,244	974,379	974,379	
25	Wool, shorn and in the form of top	2,614,328	1,495,874	899,698	718,331	1,189,093	1,219,705	1,311,409	1,389,266	1,467,027	1,544,813	1,622,602	1,700,391	1,778,180	1,855,969	1,934,758	2,013,547	2,092,336	2,171,125	2,250,014	2,328,903	2,407,792
26	Crude fertilizers and crude mineral products	81,854	84,713	99,676	82,041	55,225	37,012	28,242	33,564	48,451	33,421	21,822	24,920	21,822	28,242	4,081,118	3,701,088	3,963,768	2,401,728	2,401,728	1,938,113	2,484,378
27	Crude animal and vegetable materials	153,976	184,479	225,451	292,343	537,310	635,475	523,392	447,002	641,406	730,241	1,055,611	1,559,618	1,883,384	1,894,524	2,898,104	3,204,048	2,848,036	3,277,394	5,183,084	3,277,394	5,183,084
28	Crude animal and vegetable materials	51,962	98,074	76,134	76,134	80,786	126,306	126,306	148,264	113,232	80,791	93,059	108,676	173,306	169,641	200,119	223,878	266,889	266,889	266,889	350,400	350,400
29	Crude animal and vegetable materials	55,318	61,382	57,172	60,356	65,237	88,031	70,980	62,202	90,223	74,158	47,238	43,423	41,986	34,634	42,637	90,279	68,449	61,173	69,818	69,818	
30	Crude animal and vegetable materials	1,202,361	98,965	81,854	84,713	99,676	82,041	55,225	37,012	28,242	33,564	48,451	33,421	21,822	28,242	4,081,118	3,701,088	3,963,768	2,401,728	2,401,728	1,938,113	
31	Crude animal and vegetable materials	1,202,361	98,965	81,854	84,713	99,676	82,041	55,225	37,012	28,242	33,564	48,451	33,421	21,822	28,242	4,081,118	3,701,088	3,963,768	2,401,728	2,401,728	1,938,113	
32	Crude animal and vegetable materials	1,202,361	98,965	81,854	84,713	99,676	82,041	55,225	37,012	28,242	33,564	48,451	33,421	21,822	28,242	4,081,118	3,701,088	3,963,768	2,401,728	2,401,728	1,938,113	
33	Crude animal and vegetable materials	1,202,361	98,965	81,854	84,713	99,676	82,041	55,225	37,012	28,242	33,564	48,451	33,421	21,822	28,242	4,081,118	3,701,088	3,963,768	2,401,728	2,401,728	1,938,113	
34	Crude animal and vegetable materials	1,202,361	98,965	81,854	84,713	99,676	82,041	55,225	37,012	28,242	33,564	48,451	33,421	21,822	28,242	4,081,118	3,701,088	3,963,768	2,401,728	2,401,728	1,938,113	
35	Crude animal and vegetable materials	1,202,361	98,965	81,854	84,713	99,676	82,041	55,225	37,012	28,242	33,564	48,451	33,421	21,822	28,242	4,081,118	3,701,088	3,963,768	2,401,728	2,401,728	1,938,113	
36	Crude animal and vegetable materials	1,202,361	98,965	81,854	84,713	99,676	82,041	55,225	37,012	28,242	33,564	48,451	33,421	21,822	28,242	4,081,118	3,701,088	3,963,768	2,401,728	2,401,728	1,938,113	
37	Crude animal and vegetable materials	1,202,361	98,965	81,854	84,713	99,676	82,041	55,225	37,012	28,242	33,564	48,451	33,421	21,822	28,242	4,081,118	3,701,088	3,963,768	2,401,728	2,401,728	1,938,113	
38	Crude animal and vegetable materials	1,202,361	98,965	81,854	84,713	99,676	82,041	55,225	37,012	28,242	33,564	48,451	33,421	21,822	28,242	4,081,118	3,701,088	3,963,768	2,401,728	2,401,728	1,938,113	
39	Crude animal and vegetable materials	1,202,361	98,965	81,854	84,713	99,676	82,041	55,225	37,012	28,242	33,564	48,451	33,421	21,822	28,242	4,081,118	3,701,088	3,963,768	2,401,728	2,401,728	1,938,113	
40	Crude animal and vegetable materials	1,202,361	98,965	81,854	84,713	99,676	82,041	55,225	37,012	28,242	33,564	48,451	33,421	21,822	28,242	4,081,118	3,701,088	3,963,768	2,401,728	2,401,728	1,938,113	
41	Crude animal and vegetable materials	1,202,361	98,965	81,854	84,713	99,676	82,041	55,225	37,012	28,242	33,564	48,451	33,421	21,822	28,242	4,081,118	3,701,088	3,963,768	2,401,728	2,401,728	1,938,113	
42	Crude animal and vegetable materials	1,202,361	98,965	81,854	84,713	99,676	82,041	55,225	37,012	28,242	33,564	48,451	33,421	21,822	28,242	4,081,118	3,701,088	3,963,768	2,401,728	2,401,728	1,938,113	
43	Crude animal and vegetable materials	1,202,361	98,965	81,854	84,713	99,676	82,041	55,225	37,012	28,242	33,564	48,451	33,421	21,822	28,242	4,081,118	3,701,088	3,963,768	2,401,728	2,401,728	1,938,113	
44	Crude animal and vegetable materials	1,202,361	98,965	81,854	84,713	99,676	82,041	55,225	37,012	28,242	33,564	48,451	33,421	21,822	28,242	4,081,118	3,701,088	3,963,768	2,401,728	2,401,728	1,938,113	
45	Crude animal and vegetable materials	1,202,361	98,965	81,854	84,713	99,676	82,041	55,225	37,012	28,242	33,564	48,451	33,421	21,822	28,242	4,081,118	3,701,088	3,963,768	2,401,728	2,401,728	1,938,113	
46	Crude animal and vegetable materials	1,202,361	98,965	81,854	84,713	99,676	82,041	55,225	37,012	28,242	33,564	48,451	33,421	21,822	28,242	4,081,118	3,701,088	3,963,768	2,401,728	2,401,728	1,938,113	
47	Crude animal and vegetable materials	1,202,361	98,965	81,854	84,713	99,676	82,041	55,225	37,012	28,242	33,564	48,451	33,421	21,822	28,242	4,081,118	3,701,088	3,963,768	2,401,728	2,401,728	1,938,113	
48	Crude animal and vegetable materials	1,202,361	98,965	81,854	84,713	99,676	82,041	55,225	37,012	28,242	33,564	48,451	33,421	21,822	28,242	4,081,118	3,701,088	3,963,768	2,401,728	2,401,728	1,938,113	
49	Crude animal and vegetable materials	1,202,361	98,965	81,854	84,713	99,676	82,041	55,225	37,012	28,242	33,564	48,451	33,421	21,822	28,242	4,081,118	3,701,088	3,963,768	2,401,728	2,401,728	1,938,113	
50	Crude animal and vegetable materials	1,202,361	98,965	81,854	84,713	99,676	82,041	55,225	37,012	28,242	33,564	48,451	33,421									

Table A6: Comparison of the commodity composition of exports and imports in China's customs statistics and the CIA estimates: SITC-RI_2-digit level, 1980-1982 (share in total exports or imports in %)

SITC-RI Code (2-digit)	Name of items	China's customs statistics				CIA estimate				China's customs statistics				CIA estimate			
		1980	1981	1982	1982	1980	1981	1982	1982	1980	1981	1982	1982	1980	1981	1982	
00	Live animals	1.93	1.71	1.65	1.78	1.60	0.02	0.01	0.01	0.01	0.01	0.01	0.01	0.01	0.02	0.01	
01	Meat and preparations	2.00	1.69	2.18	2.04	1.75	1.67	1.60	0.00	0.00	0.00	0.00	0.00	0.01	0.00	0.00	
02	Dairy products and eggs	0.39	0.36	0.35	0.48	0.45	0.41	0.28	0.05	0.10	0.28	0.00	0.02	0.02	0.05	0.20	
03	Fish and fish preparations	2.09	1.70	1.48	2.14	1.99	1.57	1.07	0.07	0.08	0.12	0.00	0.01	0.01	0.01	0.03	
04	Cereals and cereal preparations	2.34	1.34	1.40	2.38	2.39	2.03	12.28	16.18	17.74	17.74	11.54	12.90	14.77	14.77	14.77	
05	Fruit and vegetables	4.12	3.84	3.67	5.02	4.91	4.25	0.24	0.25	0.35	0.35	1.24	0.47	0.70	0.70	0.70	
06	Sugar, sugar preparations and honey	1.22	0.69	0.44	1.08	0.72	0.80	1.58	2.38	3.57	3.57	1.45	2.61	3.85	2.61	3.85	
07	Coffee, tea, cocoa, spices and manufactures thereof	1.82	1.31	1.50	1.51	1.38	1.59	0.33	0.17	0.41	0.41	0.19	0.19	0.36	0.19	0.36	
08	Feeding-stuff for animals (not including unmilled cereals)	0.32	0.41	0.49	0.39	0.55	0.51	0.07	0.07	0.12	0.26	0.03	0.09	0.09	0.25	0.25	
09	Miscellaneous food preparations	0.28	0.24	0.26	0.20	0.20	0.21	0.01	0.02	0.05	0.02	0.02	0.04	0.06	0.04	0.06	
10	Beverages	0.15	0.11	0.28	0.33	0.32	0.34	0.01	0.03	0.03	0.03	0.03	0.03	0.05	0.07	0.07	
11	Tobacco and tobacco manufactures	0.29	0.16	0.16	0.30	0.33	0.24	0.17	1.11	0.68	0.14	0.44	0.45	0.45	0.45	0.45	
12	Hides, skins and fur skins, undressed	0.48	0.42	0.42	0.41	0.38	0.29	0.48	0.33	0.33	0.56	0.24	0.14	0.44	0.44	0.44	
21	Oil-seeds, oil nuts and oil kernels	0.82	1.92	0.90	0.99	2.45	1.00	0.88	0.96	0.62	0.82	0.82	0.87	0.87	0.87	0.87	
22	Crude rubber (including synthetic and reclaimed)	0.02	0.02	0.02	0.02	0.02	0.02	1.80	1.20	0.98	2.17	1.20	1.46	1.46	1.46	1.46	
24	Wood, lumber and cork	0.14	0.05	0.05	0.16	0.10	0.10	1.26	1.35	2.79	0.43	0.81	1.84	1.84	1.84	1.84	
25	Pulp and waste paper	0.00	0.00	0.00	0.01	0.01	0.01	1.05	2.05	1.20	0.99	1.01	0.99	1.01	0.99	1.01	
26	Textile fibers (not manufactured into yarn, thread or fabrics) and their waste	3.02	2.07	2.64	1.38	1.32	0.93	10.56	14.19	8.28	10.95	12.66	8.66	8.66	8.66	8.66	
27	Crude fertilizers and crude minerals (excluding coal, petroleum and precious stones)	0.96	0.90	0.94	1.39	1.21	1.19	0.38	0.44	0.47	0.20	0.12	0.12	0.12	0.12	0.12	
28	Metalliferous ores and metal scrap	1.58	1.45	0.50	0.91	0.96	0.53	1.13	0.84	1.03	1.03	0.14	0.10	0.17	0.10	0.17	
29	Crude animal and vegetable materials, n.e.s.	2.44	1.82	1.78	2.84	2.13	1.89	0.38	0.28	0.54	0.56	0.36	0.29	0.50	0.50	0.50	
32	Coal, coke, and briquettes	1.49	1.62	1.70	1.32	1.25	1.31	0.32	0.30	0.34	0.72	0.64	0.56	0.77	0.77	0.77	
33	Petroleum and petroleum products	21.80	22.02	21.51	22.09	21.03	20.08	0.63	0.06	0.55	0.72	0.31	0.18	0.18	0.18	0.18	
34	Gas, natural and manufactured	0.00	0.00	0.00	0.01	0.00	0.00	0.00	0.00	0.00	0.00	0.00	0.00	0.00	0.00	0.00	
35	Electric energy	0.00	0.00	0.00	0.00	0.00	0.00	0.00	0.00	0.00	0.00	0.00	0.00	0.00	0.00	0.00	
41	Animal oils and fats	0.01	0.00	0.00	0.00	0.00	0.00	0.41	0.15	0.16	0.32	0.10	0.16	0.16	0.16	0.16	
42	Fixed vegetable oils and fats	0.31	0.39	0.34	0.43	0.49	0.28	0.79	0.38	0.42	0.69	0.48	0.36	0.48	0.36	0.48	
43	Animal and vegetable oils and fats, processed, and waxes of animal or vegetable origin	0.01	0.01	0.01	0.02	0.01	0.01	0.00	0.00	0.01	0.02	0.02	0.02	0.02	0.02	0.02	
51	Chemical elements and compounds	2.40	3.15	2.82	2.50	2.58	2.30	6.40	6.52	7.45	2.79	2.61	3.17	2.61	3.17	3.17	
52	Mineral tar and crude chemicals from coal, petroleum a natural gas	0.16	0.07	0.49	0.15	0.26	0.13	0.14	0.04	0.05	0.00	0.00	0.00	0.00	0.00	0.00	
53	Dyeing, tanning and colouring materials	0.38	0.30	0.34	0.31	0.30	0.29	0.50	0.62	0.85	0.42	0.64	0.85	0.42	0.64	0.85	
54	Medicinal and pharmaceutical products	1.44	1.14	1.08	1.01	0.92	0.85	0.07	0.16	0.20	0.10	0.16	0.20	0.10	0.16	0.20	
55	Essential oils and perfume materials, toilet, polishing and cleansing preparations	0.60	0.51	0.43	0.52	0.44	0.44	0.02	0.10	0.04	0.05	0.09	0.13	0.05	0.09	0.13	
56	Fertilizers, manufactured	0.00	0.00	0.01	0.02	0.03	0.02	2.19	3.29	3.23	4.49	4.20	3.49	4.20	3.49	4.20	
57	Explosives and pyrotechnic products	0.33	0.28	0.29	0.51	0.44	0.47	0.01	0.01	0.01	0.00	0.00	0.00	0.00	0.00	0.00	
58	Plastic materials, regenerated cellulose and artificial resins	0.34	0.22	0.14	0.39	0.29	0.18	4.60	2.69	3.68	1.92	2.65	3.70	2.65	3.70	3.70	
59	Chemical materials and products, n.e.s.	0.84	0.76	0.52	0.87	0.85	0.56	0.50	0.48	0.49	0.94	0.88	1.12	0.88	1.12	1.12	
61	Leather, leather manufactures, n.e.s. an dressed fur skins	0.63	0.41	0.39	0.62	0.43	0.26	0.47	0.53	0.33	0.74	0.73	0.97	0.73	0.97	0.97	
62	Rubber manufactures, n.e.s.	0.29	0.22	0.27	0.29	0.28	0.23	0.05	0.02	0.04	0.10	0.06	0.08	0.06	0.08	0.08	
63	Wood and cork manufactures (excluding furniture)	0.15	0.14	0.14	0.31	0.27	0.23	0.19	0.65	1.06	0.28	0.19	0.28	0.19	0.28	0.28	
64	Paper, paperboard and manufactures thereof	0.75	0.72	0.65	0.83	0.82	0.70	1.71	2.00	1.84	1.35	1.35	1.35	1.35	1.35	1.35	
65	Textile yarn, fabrics, made-up articles and related products	13.07	11.38	10.41	14.83	14.41	11.99	3.44	7.28	4.47	4.36	8.75	6.95	8.75	6.95	6.95	
66	Non-metallic mineral manufactures, n.e.s.	1.86	1.74	1.45	2.23	2.24	1.96	0.48	0.48	0.84	0.80	0.93	1.05	0.80	0.93	1.05	
67	Iron and steel	1.31	2.37	2.18	1.38	2.09	1.95	11.08	8.48	9.74	11.58	7.32	11.25	7.32	11.25	11.25	
68	Non-ferrous metals	1.07	1.13	0.79	0.99	1.08	0.88	2.71	1.68	3.15	2.17	0.91	2.59	2.17	0.91	2.59	
69	Manufactures of metal, n.e.s.	2.31	2.46	2.33	2.09	2.43	2.33	0.56	0.28	0.24	1.90	1.90	1.90	1.90	1.90	1.90	
71	Machinery, other than electric	1.50	1.35	1.33	1.53	1.56	1.36	6.57	5.52	5.20	14.55	14.13	8.43	14.13	8.43	8.43	
72	Electrical machinery, apparatus and appliances	2.28	1.50	1.42	1.46	1.58	1.42	13.50	4.17	3.28	5.58	7.47	4.93	5.58	7.47	4.93	
73	Transport equipment	0.80	2.05	2.86	0.80	0.41	0.63	0.45	5.68	4.56	4.52	7.76	3.90	6.34	3.90	6.34	
81	Sanitary, plumbing, heating and lighting fixtures an fittings	0.30	0.29	0.25	0.31	0.32	0.31	0.02	0.03	0.04	0.03	0.06	0.05	0.03	0.06	0.05	
82	Furniture	0.61	0.64	0.63	0.67	0.77	0.86	0.01	0.02	0.03	0.02	0.02	0.02	0.02	0.02	0.02	
83	Travel goods, handbags and similar articles	0.41	0.39	0.44	0.45	0.53	0.60	0.00	0.00	0.00	0.00	0.00	0.00	0.00	0.00	0.00	
84	Clothing	8.85	9.18	9.43	8.95	9.80	10.00	0.08	0.09	0.04	0.11	0.23	0.30	0.11	0.23	0.30	
85	Footwear	0.96	1.03	1.03	1.06	1.21	1.16	0.00	0.00	0.00	0.00	0.00	0.00	0.00	0.00	0.00	
86	Professional, scientific and controlling instruments, photographic and optical goods, watches and clocks	0.67	0.72	0.69	0.58	0.65	0.55	1.82	1.86	1.43	1.50	2.00	1.89	1.50	2.00	1.89	
89	Miscellaneous manufactured articles, n.e.s.	4.61	5.50	4.95	4.16	3.87	3.56	0.64	0.64	0.63	0.79	0.83	0.99	0.79	0.83	0.99	
90	Commodities and transactions not classified according to kind	1.04	4.09	8.09	0.72	0.90	1.12	1.64	4.83	6.08	1.77	2.13	1.77	2.13	1.77	2.13	
Total		100.00	100.00	100.00	100.00	100.00	100.00	100.00	100.00	100.00	100.00	100.00	100.00	100.00	100.00	100.00	